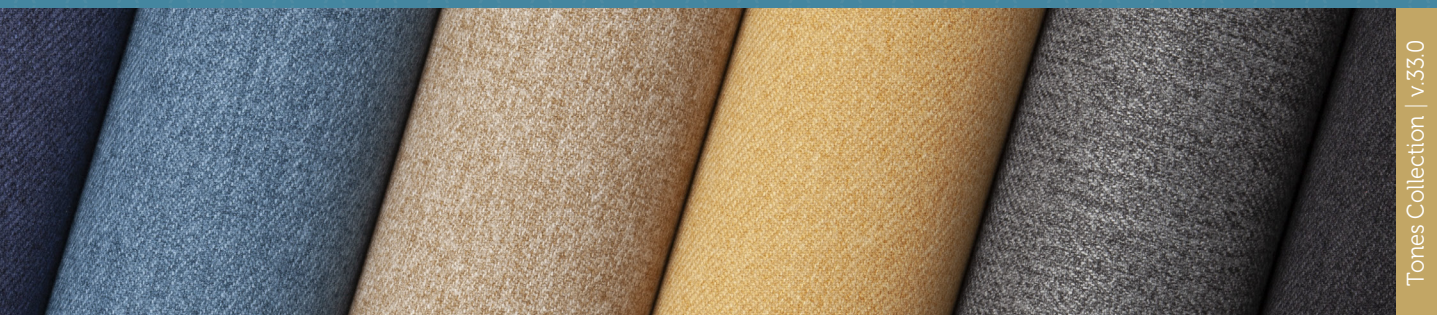


AGUA

PERFORMANCE UPHOLSTERY FABRICS

Tones Collection

A soft indoor upholstery fabric designed to look like wool



Tones Collection | v.33.0



Anti-Microbial



Bleach Cleanable



Fire Retardant
Crib 5/IMO



Stain Resistant



Waterproof



Martindale Abrasion
Severe Contract



Phthalate Free



REACH Compliant

Tones

A beautifully soft indoor upholstery fabric giving the appearance of a traditional wool fabric.

Perfect for:

Commercial, cruise, hospitality, leisure and senior living.

Fabric Specifications

Flame retardant	BS7176 Crib 5, BS EN 1021-1:2006 1&2, BS5852 Crib 5, IMO Annex 1 Part 8.
Anti-bacterial/Anti-fungal	Resistant to microbial or fungal growth including Salmonella, E Coli and MRSA.
Waterproof	Hydrostatic Head BS3424 > 1 metre.
Martindale	Severe Contract > 100,000
Stain resistant	Excellent stain removal has been observed for grease, ink, blood, urine, coffee, iodine, betadine, ketchup, chewing gum, chocolate, grape juice.
Breathable	Moisture vapour permeable
Composition	100% Treated Polyester.
Width	140cm (55") wide.

Technical Information

We recommend a minimum of 32 stitches per 10 cm (8 stitches per inch) and seams must have a minimum 12mm (0.5") bite on the fabric.

Not suitable for use as removable loose covers.

Please note that all fabric offered is subject to minor tolerance in respect of shade and other slight variations.

Technical specifications may be amended, please check for the latest information.

Please ask if you require a sample of the current batch available but be aware that stock can move quickly.

Tones can be colour co-ordinated with Agua faux leather collections to produce stunning furniture with dual textured finishes.

Bespoke colours can be produced subject to minimum quantity orders.

Fabric Care

Use a vacuum cleaner or soft brush to remove dust and solid particles.

Always try cleaning products on a hidden piece of fabric to test suitability.

Wipe frequently with a damp cloth to maintain the appearance of the fabric.

All spillages should be removed immediately with a clean absorbent cloth.

Most stains can be removed using cold/warm water and a clean microfibre cloth, however poorly fixed clothing dyes may cause permanent staining.

Stains from products containing oil and grease should be treated with a spirit based solution.

If soap based cleaners are used, all soap residues must be rinsed from the fabric.

Can be cleaned with mild Hypochlorite solutions (up to 10,000 ppm of available chlorine - including Haz Tabs and Chlor-Clean) or Mineral Spirit for infection control purposes.

Can be steam cleaned in situ.

Do not machine wash or dry clean.

Remove all stains immediately before they set.

Please refer to the Care Sheet on the Agua website for further details.

Do not use solvents, chemical agents, waxes or polishes as this will damage the surface of the fabric.

Samples and enquires

You can contact us for samples, order enquiries or information about any of our fabric ranges here:

Agua Fabrics Ltd,
Hyde House,
The Hyde, London NW9 6LH
T +44 (0)20 8205 0050
F +44 (0)20 8205 0660
E info@aguafabrics.com
www.aguafabrics.com



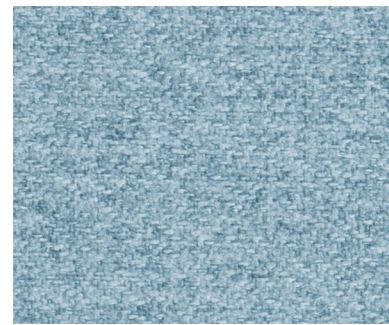
Certificate No. FS 531220

AGUA

PERFORMANCE UPHOLSTERY FABRICS



Tones Pebble



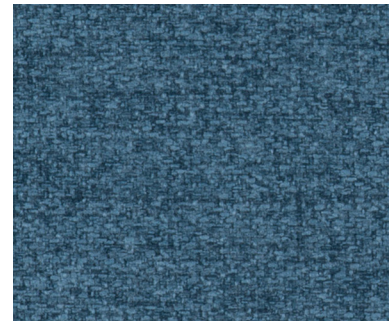
Tones Sky



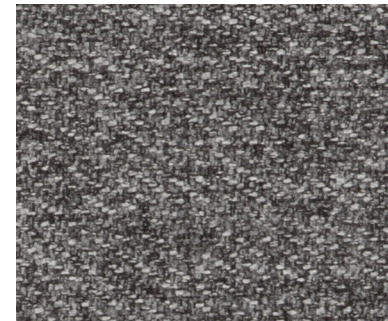
Tones Silver



Tones Latte



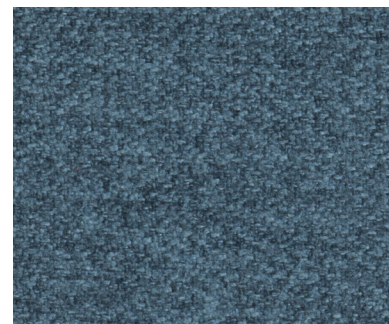
Tones Marine



Tones Pewter



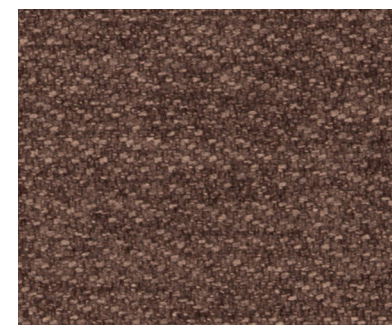
Tones Mink



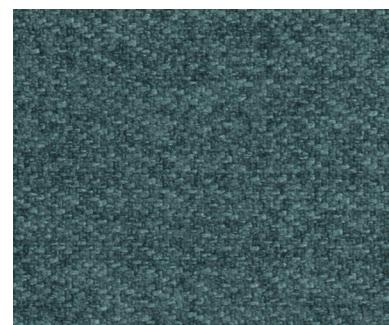
Tones Petrol



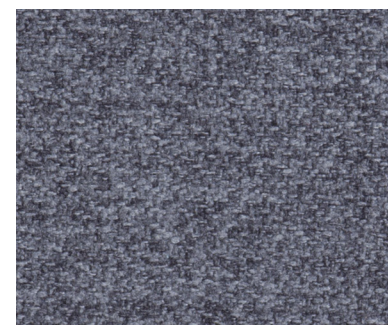
Tones Steel



Tones Truffle



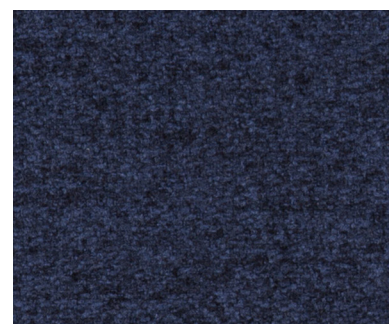
Tones Forest



Tones Lead



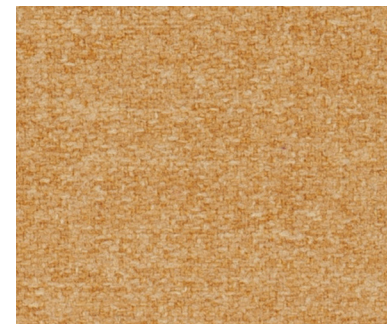
Tones Raven



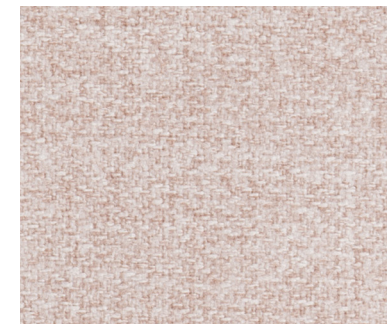
Tones Sapphire



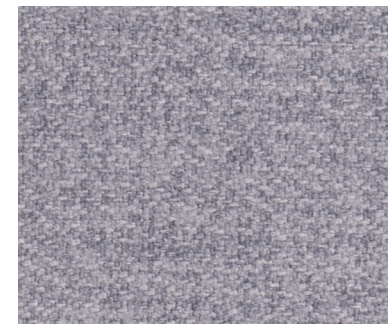
Tones Graphite



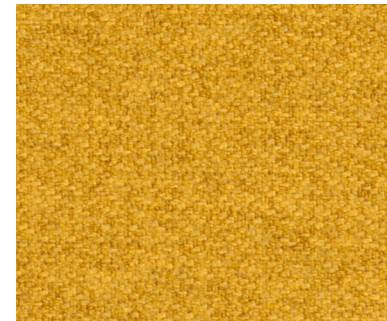
Tones Gold



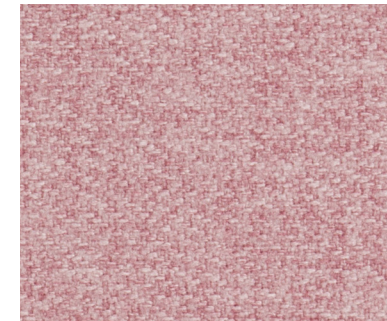
Tones Old Rose



Tones Pearl



Tones Mustard



Tones Orchid



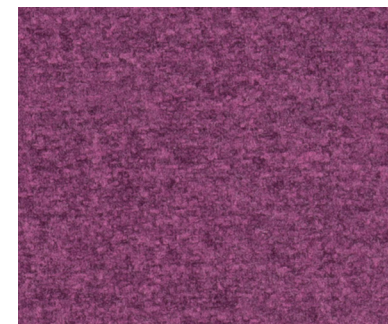
Tones Lilac



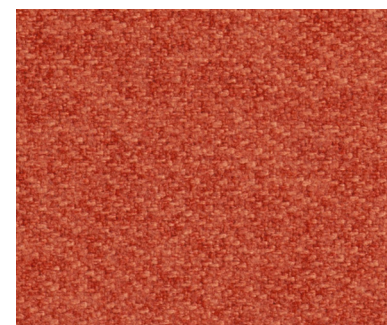
Tones Terracotta



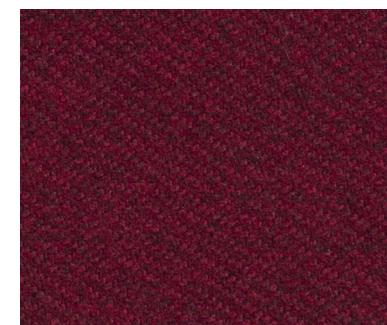
Tones Wine



Tones Thistle



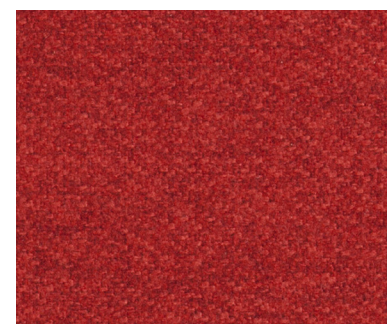
Tones Brick



Tones Claret



Tones Aubergine



Tones Tomato



Tones Cherry



Tones Olive