

# AGUA

PERFORMANCE UPHOLSTERY FABRICS

## Taurus Collection

Authentic faux leather for indoor upholstery

Taurus Collection | v. 7.6



Anti-Microbial



Bleach Cleanable



Fire Retardant Crib 5/IMO



Stain Resistant



Waterproof



Martindale Abrasion Severe Contract



Phthalate Free



REACH Compliant

# Taurus

An authentic looking faux leather ideal for every indoor environment

## Perfect for:

Commercial, cruise, healthcare, hospitality and leisure

## Fabric Specifications

Flame retardant	BS7176 Crib 5, BS EN 1021-1:2006 1&2, BS5852 Crib 5, IMO Annex 1 Part 8
Anti-bacterial/Anti-fungal	Resistant to microbial or fungal growth including Salmonella, E Coli and MRSA
Waterproof	Hydrostatic Head BS3424 > 1 metre
Breathable	Moisture vapour permeable
Martindale	Severe Contract > 400,000
Stain resistant	Excellent stain removal has been observed for grease, ink, blood, urine, coffee, iodine, betadine, ketchup, chewing gum, chocolate, grape juice
Composition	2% PU, 74% PVC, 12% PES, 12% Cotton
Weight	750 gsm ( $\pm 37$ )
Width	140cm (53") wide

## Technical Information

We recommend a minimum of 32 stitches per 10 cm (8 stitches per inch) and seams must have a minimum 12mm (0.5") bite on the fabric.

Can be stitched, tacked and glued. Cannot be heat welded.

Please note that all fabric offered is subject to minor tolerance in respect of shade and other slight variations.

Taurus can be colour co-ordinated with other Agua collections to produce stunning dual textured finishes.

Bespoke colours can be produced subject to minimum quantity orders.

Technical specifications may be amended, please check for the latest information.

Please ask if you require a sample of the current batch available but be aware that stock can move quickly.

## Fabric Care

Use a vacuum cleaner or soft brush to remove dust and solid particles.

Always try cleaning products on a hidden piece of fabric to test suitability.

Wipe frequently with a damp cloth to maintain the appearance of the fabric.

All spillages should be removed immediately with a clean absorbent cloth.

Most stains can be removed using cold/warm water and a clean microfibre cloth, however poorly fixed clothing dyes may cause permanent staining.

Stains from products containing oil and grease should be treated with a spirit based solution.

If soap based cleaners are used, all soap residues must be rinsed from the fabric.

Can be cleaned with mild Hypochlorite solutions (up to 10,000 ppm of available chlorine - including Haz Tabs and Chlor-Clean) or Mineral Spirit for infection control purposes.

Can be steam cleaned in situ.

Do not machine wash or dry clean.

Do not use solvents, chemical agents, waxes or polishes as this will damage the surface of the fabric.

Use cold water when treating stains caused by bodily fluid.

Do not use marker pens on the back of the fabric.

Please refer to the Care Sheet on the Agua website for further details.

## Samples and enquiries

You can contact us for samples, order enquiries or information about any of our fabric ranges here:

Agua Fabrics Ltd,  
Hyde House,  
The Hyde, London NW9 6LH  
T +44 (0)20 8205 0050  
T +44 (0)20 8205 0660  
E [info@aguafabrics.com](mailto:info@aguafabrics.com)  
[www.aguafabrics.com](http://www.aguafabrics.com)



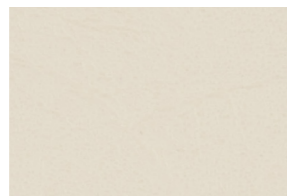
Certificate No. FS551220

# AGUA

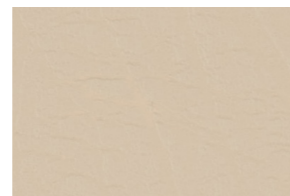
PERFORMANCE UPHOLSTERY FABRICS



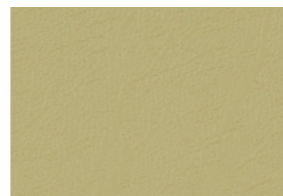
Stone



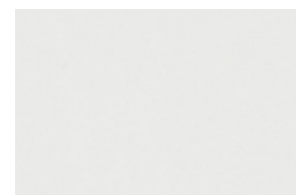
Cream



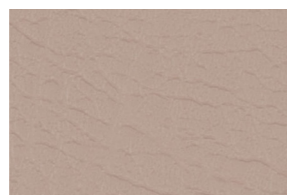
Latte



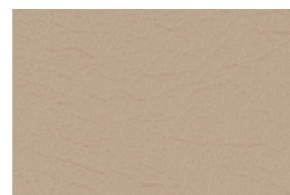
Fennel



Polar



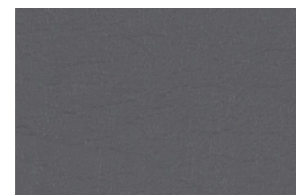
Mushroom



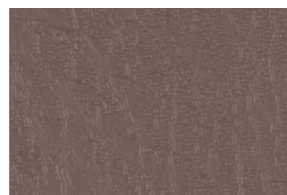
Sand



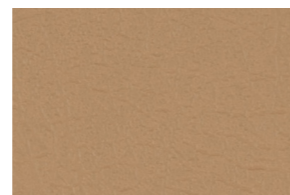
Citrus



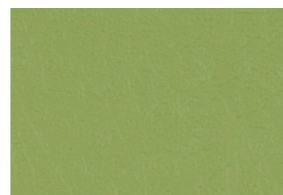
Slate



Bark



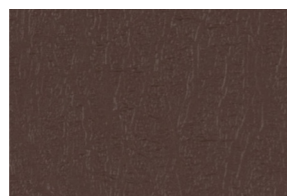
Caramel



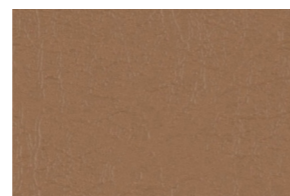
Grass



Black



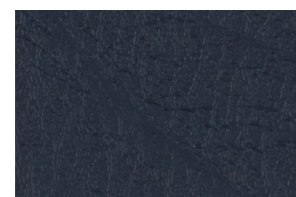
Chocolate



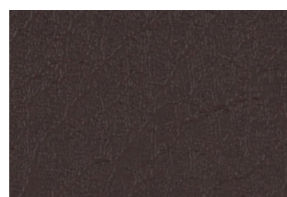
Fudge



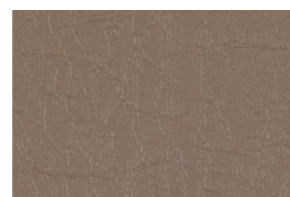
Moss



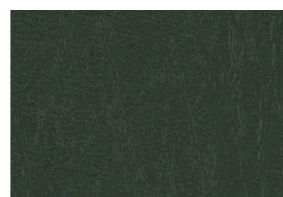
Midnight



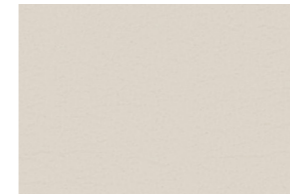
Cocoa



Taupe



Conifer



Parchment



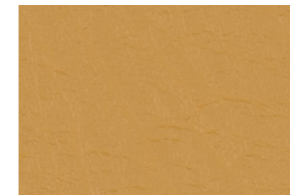
Heather



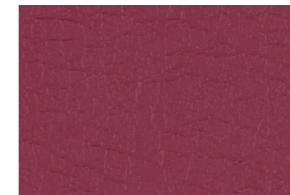
Rose



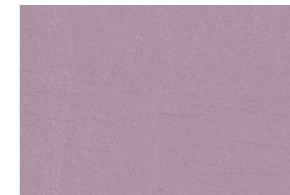
Pebble



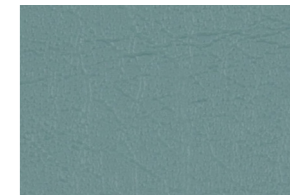
Toffee



Garnet



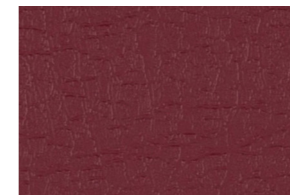
Lilac



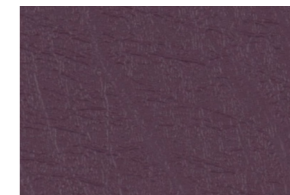
Duck Egg



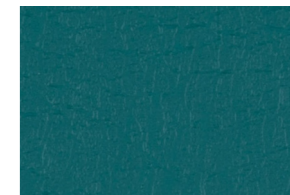
Spice



Wine



Plum



Ocean



Chilli



Carmine



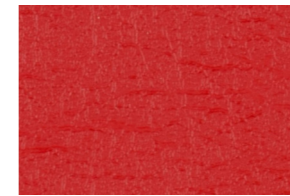
Orchid



Teal



Brick



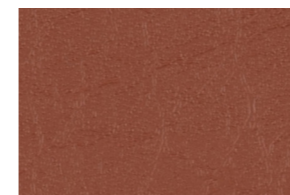
Tomato



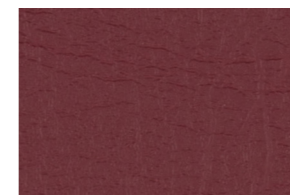
Damson



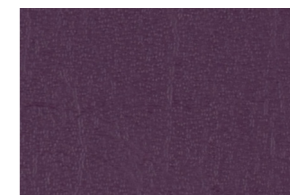
Wedgwood



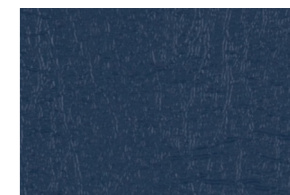
Tan



Ox



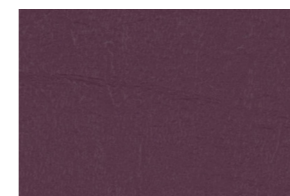
Bramble



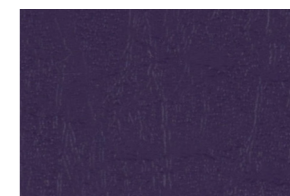
Sapphire



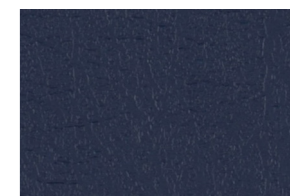
Saddle



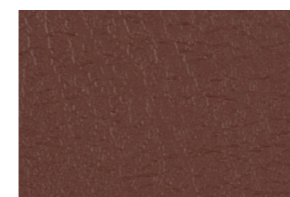
Aubergine



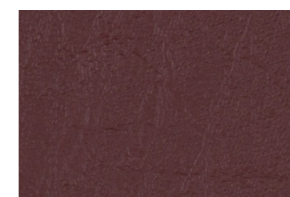
Berry



Ensign



Mocha



Rosewood