

AGUA



Top: Snowdon Mottle Burnt Orange
 Above: Snowdon Stripe Red
 Below: Snowdon Tartan Mink | Snowdon Check Stone | Snowdon Mottle Burnt Orange



Snowdon

Coordinating tartans, checks, stripes and plains for indoor upholstery

Perfect for:
 Commercial, cruise, hospitality, leisure and senior living.

Fabric Specifications

Flame retardant	BS7176 Crib 5, BS EN 1021-1:2006 162, BS5852 Crib 5, IMO Annex 1 Part 8
Anti-bacterial/Anti-fungal	Resistant to microbial or fungal growth including Salmonella, E Coli and MRSA
Waterproof	Hydrostatic Head BS3424 > 1 metre
Breathable	Moisture vapour permeable
Martindale	Severe Contract > 100,000
Stain resistant	Excellent stain removal has been observed for grease, ink, blood, urine, coffee, iodine, betadine, ketchup, chewing gum, chocolate, grape juice
Composition	100% Treated polyester. 142cm / 56" wide

Technical Information

We recommend a minimum of 32 stitches per 10 cm (8 stitches per inch) and seams must have a minimum 12mm (0.5") bite on the fabric.

Not suitable for use as removable loose covers.

Snowdon can be colour co-ordinated with the Agua faux leather collections to produce stunning furniture with dual textured finishes.

Please note that all fabric offered is subject to tolerance in respect of shade and other slight variations.

Technical specifications may be amended, please check for the latest information.

Please ask if you require a sample of the current batch available but be aware that stock can move quickly.

Fabric Care

Use a vacuum cleaner or soft brush to remove dust and solid particles.

Always try cleaning products on a hidden piece of fabric to test suitability.

Wipe frequently with a damp cloth to maintain the appearance of the fabric.

All spillages should be removed immediately with a clean absorbent cloth.

Most stains can be removed using cold/warm water and a clean microfibre cloth, however poorly fixed clothing dyes may cause permanent staining.

Stains from products containing oil and grease should be treated with a spirit based solution.

If soap based cleaners are used, all soap residues must be rinsed from the fabric.

Can be cleaned with mild Hypochlorite solutions (up to 10,000 ppm of available chlorine - including Haz Tabs and Chlor-Clean) or Mineral Spirit for infection control purposes.

Can be steam cleaned in situ.

Do not machine wash or dry clean.

Remove all stains immediately before they set.

Please refer to the Care Sheet on the Agua website for further details.

Samples and enquires

You can contact us for samples, order enquiries or information about any of our fabric ranges here:

Agua Fabrics Ltd,
 Hyde House,
 The Hyde, London NW9 6LH
 T +44 (0)20 8205 0050
 F +44 (0)20 8205 0660
 E info@aguafabrics.com
 www.aguafabrics.com



AGUA
 PERFORMANCE UPHOLSTERY FABRICS

AGUA

PERFORMANCE UPHOLSTERY FABRICS

Snowdon Collection

Coordinating tartans, checks, stripes and plains for indoor upholstery



Snowdon Collection | v. 29.1



Agua Fabrics Ltd
 Hyde House, The Hyde
 London NW9 6LH

T +44 (0)20 8205 0050
 F +44 (0)20 8205 0660
 E info@aguafabrics.com

www.aguafabrics.com

AGUA

Stripe

Stripe pattern repeat: 11cm horizontal



Snowdon Stripe Red



Snowdon Stripe Blue



Snowdon Stripe Grey

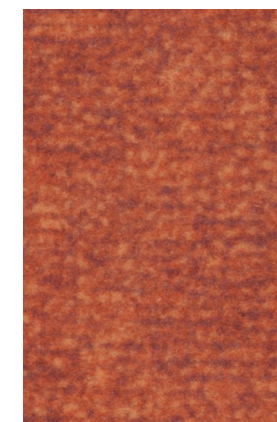


Snowdon Stripe Green



Snowdon Stripe Brown

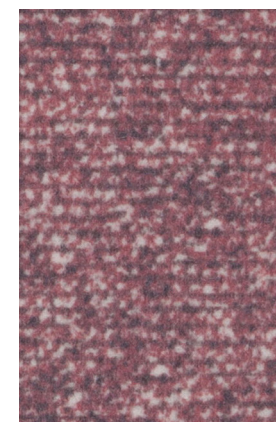
Mottle



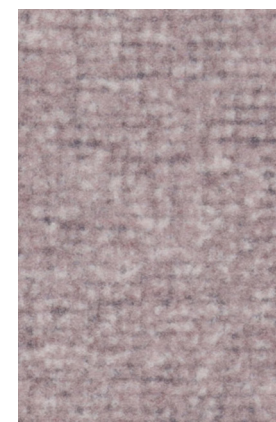
Snowdon Mottle Burnt Orange



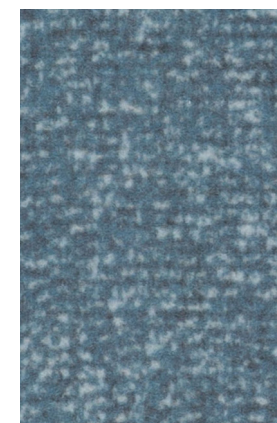
Snowdon Mottle Wine



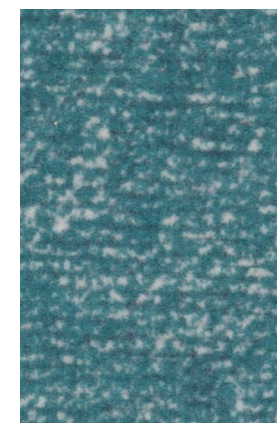
Snowdon Mottle Rose



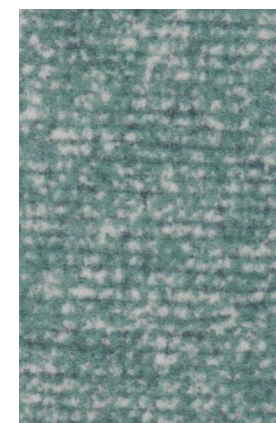
Snowdon Mottle Heather



Snowdon Mottle Bottle



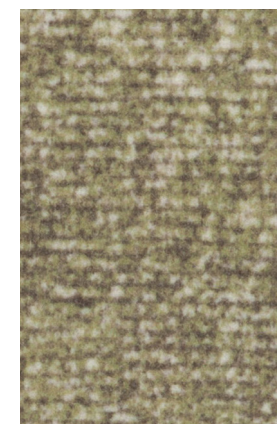
Snowdon Mottle Teal



Snowdon Mottle Duck Egg



Snowdon Mottle Grey



Snowdon Mottle Moss



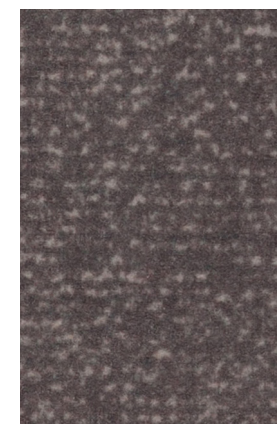
Snowdon Mottle Maize



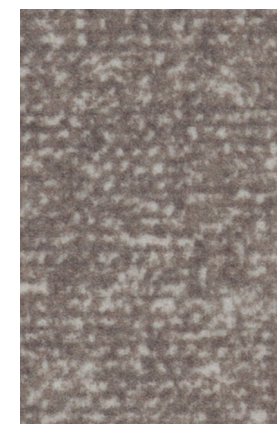
Snowdon Mottle Sand



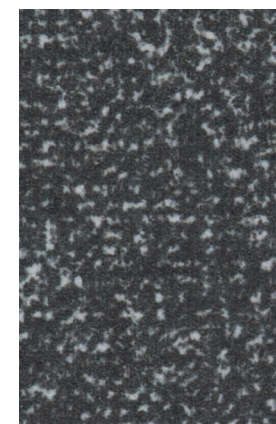
Snowdon Mottle Stone



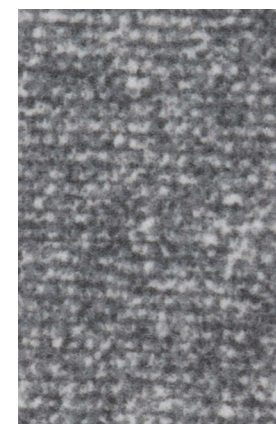
Snowdon Mottle Mink



Snowdon Mottle Bark



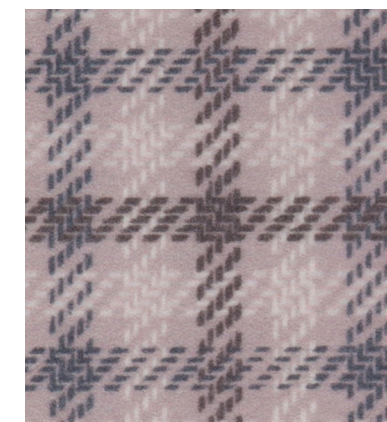
Snowdon Mottle Charcoal



Snowdon Mottle Smoke

Check

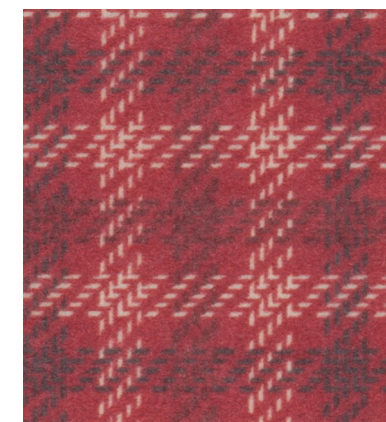
Check pattern repeat: 1.5cm horizontal / 1.5cm vertical



Snowdon Check Heather



Snowdon Check Rose



Snowdon Check Wine



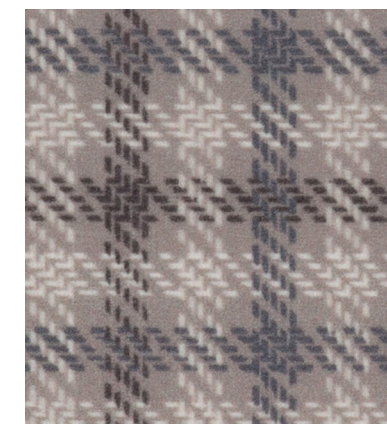
Snowdon Check Sand



Snowdon Check Slate



Snowdon Check Bottle



Snowdon Check Stone



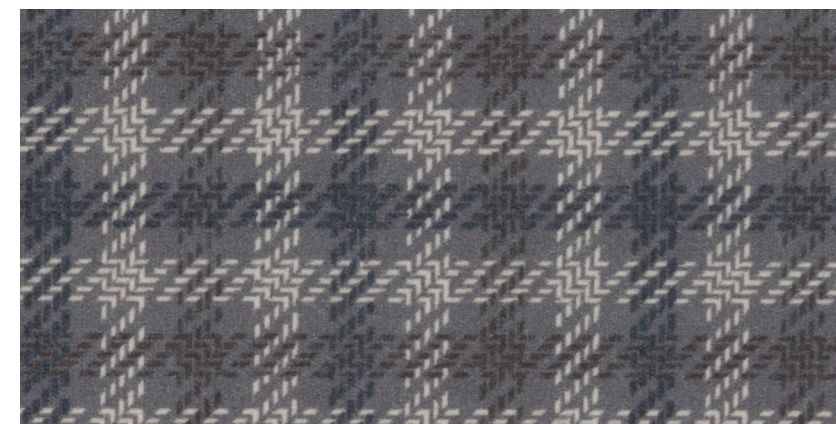
Snowdon Check Mustard



Snowdon Check Moss



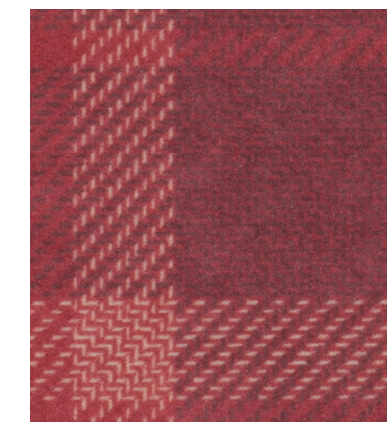
Snowdon Check Mink



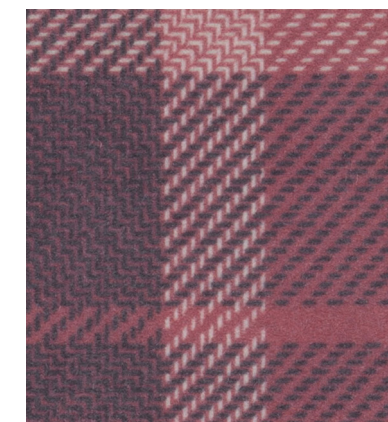
Snowdon Check Taupe

Tartan

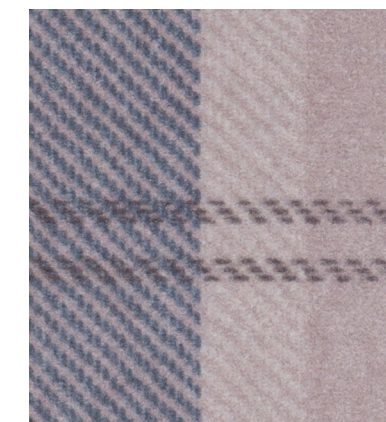
Tartan pattern repeat: 22cm horizontal / 20.5cm vertical



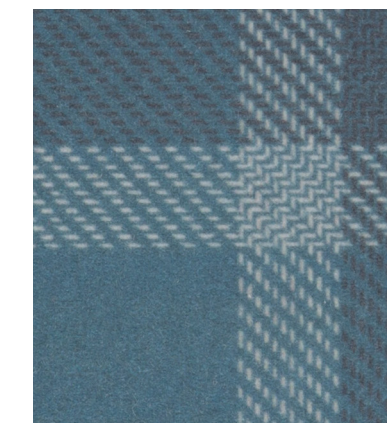
Snowdon Tartan Wine



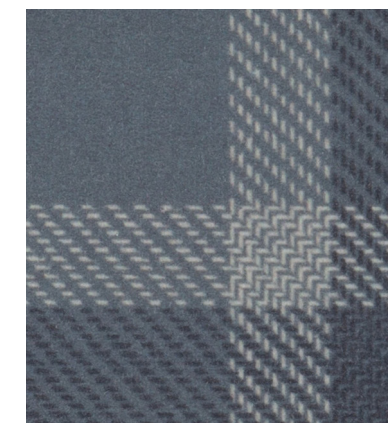
Snowdon Tartan Rose



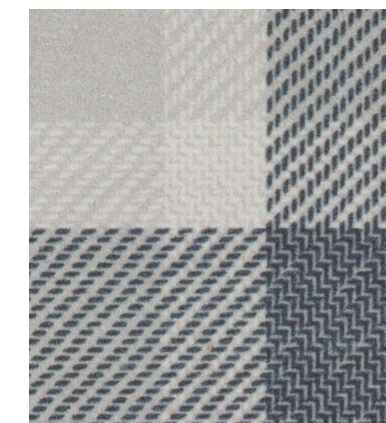
Snowdon Tartan Heather



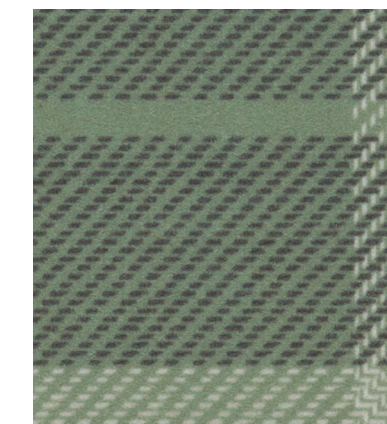
Snowdon Tartan Bottle



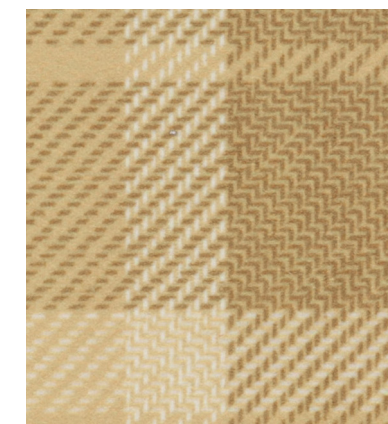
Snowdon Tartan Slate



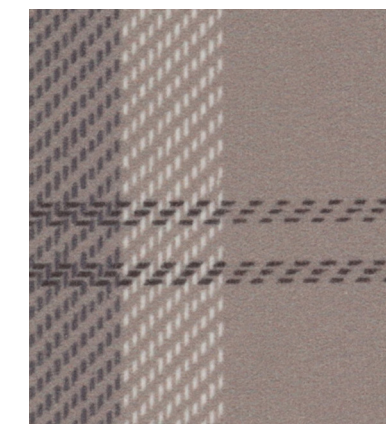
Snowdon Tartan Sand



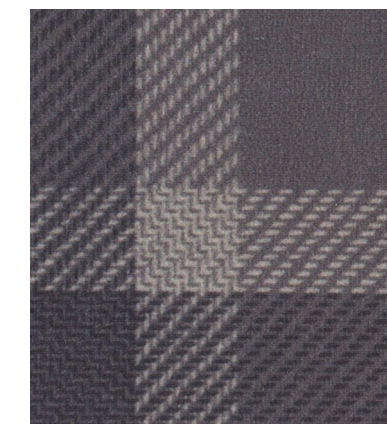
Snowdon Tartan Moss



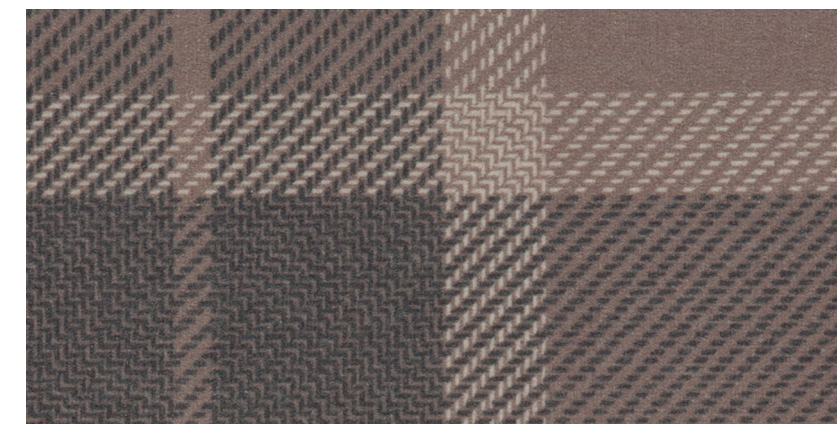
Snowdon Tartan Mustard



Snowdon Tartan Stone



Snowdon Tartan Taupe



Snowdon Tartan Mink