

# AGUA

PERFORMANCE UPHOLSTERY FABRICS

## Parody Collection

Fabric style faux leather  
for indoor upholstery

## Parody

Fabric style faux leather ideal for interior upholstery

### Perfect for:

Commercial, cruise, healthcare, hospitality and leisure.

### Fabric Specifications

Flame retardant	BS7176 Crib 5, BS EN 1021-1:2006 1&2, BS5852 Crib 5, IMO Annex 1 Part 8.
Anti-bacterial/Anti-fungal	Resistant to microbial or fungal growth including Salmonella, E Coli and MRSA.
Waterproof	Hydrostatic Head BS3424 > 1 metre.
Martindale	Severe Contract > 100,000.
Stain resistant	Excellent stain removal has been observed for grease, ink, blood, urine, coffee, iodine, betadine, ketchup, chewing gum, chocolate, grape juice.
Composition	Weave - 2% Vinyl Acrylic, 74% PVC, 12% Polyester, 12% Cotton. Denim - 70% PVC, 30% Cotton. Ocular - 2% Vinyl Acrylic, 74% PVC, 8% Cotton, 16% Polyester.
Width	140cm (55") wide.
Weight	Denim - 650g ±5%. Weave & Ocular - 750g ±5%.

### Technical Information

- We recommend a minimum of 32 stitches per 10 cm (8 stitches per inch) and seams must have a minimum 12mm (0.5") bite on the fabric.
- Parody can be colour co-ordinated with other Agua collections to produce stunning dual textured finishes.
- Please note that all fabric offered is subject to minor tolerance in respect of shade and other slight variations.
- Can be stitched, tacked and glued. Cannot be heat welded.
- Bespoke colours can be produced subject to minimum quantity orders.
- Technical specifications may be amended, please check for the latest information.
- Please ask if you require a sample of the current batch available but be aware that stock can move quickly.

### Fabric Care

- Poorly fixed clothing dyes, e.g. denim, will cause permanent staining. Most stains can be removed using cold/warm water and a clean microfibre cloth.
- Use a vacuum cleaner or soft brush to remove dust and solid particles.
- Wipe frequently with a damp cloth to maintain the appearance of the fabric.
- Remove all stains immediately before they set. All spillages should be removed immediately with a clean absorbent cloth.
- If soap based cleaners are used, all soap residues must be rinsed from the fabric.
- Can be steam cleaned in situ.
- Do not machine wash or dry clean.
- Can be cleaned with mild Hypochlorite solutions (10,000 ppm of available chlorine) e.g.: Haz Tabs, Chlor-Clean. Continued use may cause discolouration and surface damage.
- Always try cleaning products on a hidden piece of fabric to test suitability.
- Do not use: solvents, abrasives, chemical agents, waxes or polishes as this will damage the surface of the fabric.
- Do not use marker pens on the back of the fabric.
- Please refer to the Parody Fabric Technical Specifications PDF download on the Agua website for further details.

### Our Environmental Policy

Our products have always been phthalate free and Reach\* compliant. Our processes are non-toxic and the methods used during manufacture and finishing ensure that potentially hazardous accidental cross contamination is minimised to the greatest degree possible. All our fabrics meet the stringent Oeko-Tex\*\*

standards, regardless of origin, so are free from harmful chemicals and safe for human use.

\* Registration, Evaluation, Authorisation and Restriction of Chemicals (EU regulation: 18th December 2006)  
\*\* See more: [www.oeko-tex.com](http://www.oeko-tex.com)

### Samples and Enquires

You can contact us for samples, order enquiries or information about any of our fabric ranges here:

Agua Fabrics Ltd,  
Hyde House,  
The Hyde, London NW9 6LH  
T +44 (0)20 8205 0050  
E [info@aguafabrics.com](mailto:info@aguafabrics.com)  
[www.aguafabrics.com](http://www.aguafabrics.com)



Certificate No. FS 531220

**AGUA**  
PERFORMANCE UPHOLSTERY FABRICS



### Denim



Parody Denim Sand



Parody Denim Charcoal



Parody Denim Ocean

### Ocular



Parody Ocular Driftwood



Parody Ocular Bark

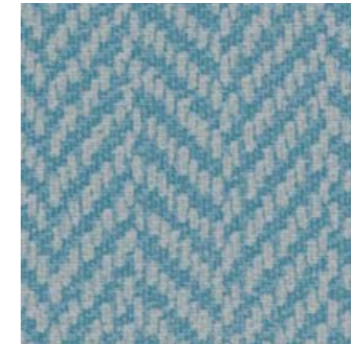


Parody Ocular Ebony

### Weave



Parody Weave Oatmeal



Parody Weave Sea Grass



Parody Weave Candy



Parody Weave Coffee



Parody Weave Orion



Parody Weave Crocus



Parody Weave Olive



Parody Weave Charcoal