

# AGUA

PERFORMANCE UPHOLSTERY FABRICS

## Juno Collection

Chenille fabric for indoor upholstery

## Juno

A stunning contemporary chenille fabric with a blend of texture and softness for indoor upholstery.

### Perfect for:

Commercial, cruise, hospitality, leisure and senior living.

### Fabric Specifications

Flame retardant	BS7176 Crib 5, BS EN 1021-1:2006 1&2, BS5852 Crib 5, IMO Annex 1 Part 8.
Anti-bacterial/Anti-fungal	Resistant to microbial or fungal growth including Salmonella, E Coli and MRSA.
Waterproof	Hydrostatic Head BS3424 > 1 metre.
Breathable	Moisture vapour permeable.
Martindale	Severe Contract > 50,000.
Stain resistant	Excellent stain removal has been observed for grease, ink, blood, urine, coffee, iodine, betadine, ketchup, chewing gum, chocolate, grape juice.
Composition	100% Treated polyester.
Width	140cm (55") wide.

### Technical Information

We recommend a minimum of 32 stitches per 10 cm (8 stitches per inch) and seams must have a minimum 12mm (0.5") bite on the fabric.

Not suitable for use as removable loose covers.

Please note that all fabric offered is subject to minor tolerance in respect of shade and other slight variations.

Juno can be colour co-ordinated with Agua faux leather collections to produce stunning furniture with dual textured finishes.

Technical specifications may be amended, please check for the latest information.

Please ask if you require a sample of the current batch available but be aware that stock can move quickly.

### Fabric Care

Use a vacuum cleaner or soft brush to remove dust and solid particles.

Always try cleaning products on a hidden piece of fabric to test suitability.

Wipe frequently with a damp cloth to maintain the appearance of the fabric.

All spillages should be removed immediately with a clean absorbent cloth.

Most stains can be removed using cold/warm water and a clean microfibre cloth, however poorly fixed clothing dyes may cause permanent staining.

Stains from products containing oil and grease should be treated with a spirit based solution.

If soap based cleaners are used, all soap residues must be rinsed from the fabric.

Can be cleaned with mild Hypochlorite solutions (10,000 ppm of available chlorine) e.g.: Haz Tabs, Chlor-Clean. Continued use may cause discolouration and surface damage.

Do not use solvents, chemical agents, waxes or polishes as this will damage the surface of the fabric.

Can be steam cleaned in situ.

Do not machine wash or dry clean.

Remove all stains immediately before they set.

Please refer to the Care Sheet on the Agua website for further details.

### Samples and enquires

You can contact us for samples, order enquiries or information about any of our fabric ranges here:



Certificate No. FS 531220

Agua Fabrics Ltd,  
Hyde House,  
The Hyde, London NW9 6LH  
T +44 (0)20 8205 0050  
F +44 (0)20 8205 0660  
E [info@aguafabrics.com](mailto:info@aguafabrics.com)  
[www.aguafabrics.com](http://www.aguafabrics.com)

# AGUA

PERFORMANCE UPHOLSTERY FABRICS



Anti-Microbial



Bleach Cleanable



Fire Retardant  
Crib 5/IMO



Stain Resistant



Waterproof



Martindale Abrasion  
Severe Contract

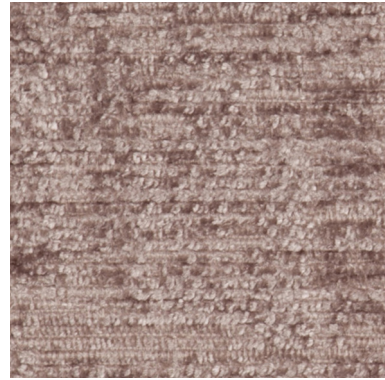


Phthalate Free



REACH Compliant

A stunning contemporary chenille fabric with a blend of texture and softness for indoor upholstery.



Juno Grey



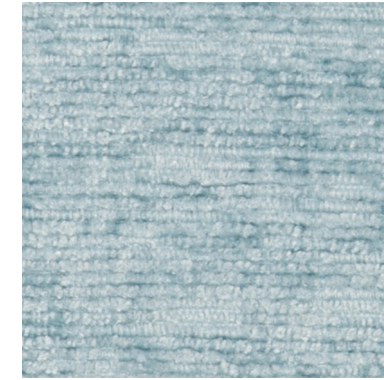
Juno Stone



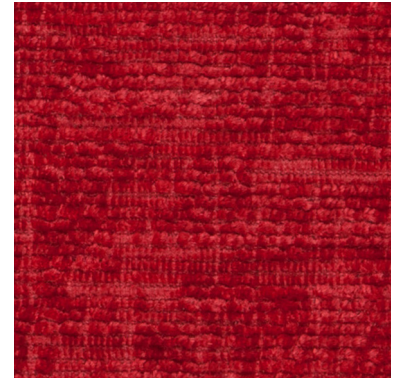
Juno Caramel



Juno Cream



Juno Duck Egg



Juno Red



Juno Silver



Juno Mink



Juno Antique Gold



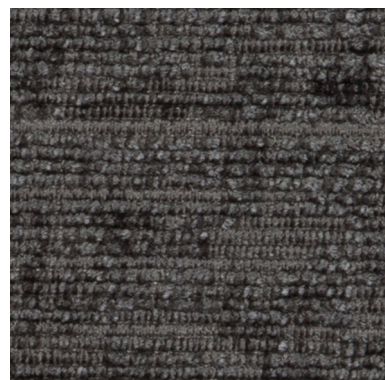
Juno Lime



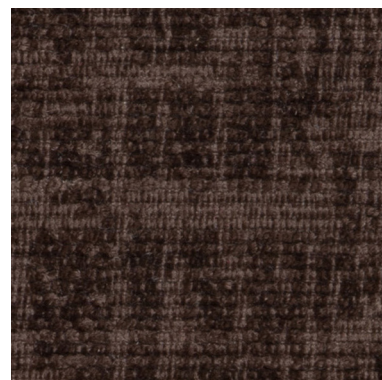
Juno Teal



Juno Raspberry



Juno Charcoal



Juno Mocha



Juno Burnt Orange



Juno Leaf



Juno Bluebell



Juno Pink



Juno Black



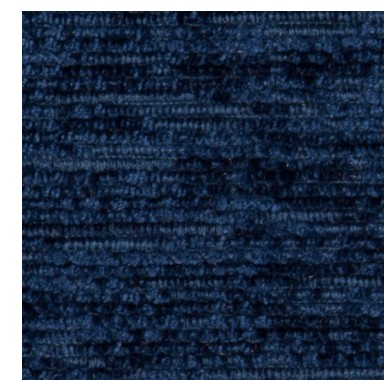
Juno Chocolate



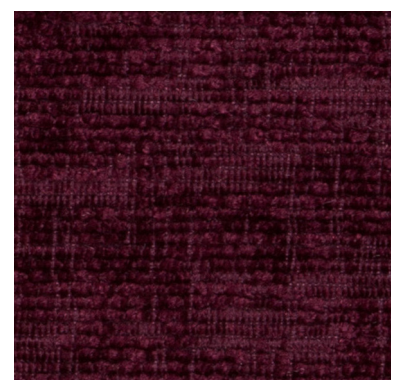
Juno Gold



Juno Purple



Juno Midnight



Juno Aubergine