

AGUA

PERFORMANCE UPHOLSTERY FABRICS

Carmina Collection

A lustrous crushed velvet for interior upholstery

Carmina

A crushed velvet ideal for a wide variety of interior upholstery uses, including headboards

Perfect for:

Commercial, cruise, hospitality, leisure and senior living

Fabric Specifications

<i>Flame retardant</i>	BS7176 Crib 5, BS EN 1021-1:2006 1&2, BS5852 Crib 5, IMO Annex 1 Part 8
<i>Anti-bacterial/Anti-fungal</i>	Resistant to microbial or fungal growth including Salmonella, E Coli and MRSA
<i>Waterproof</i>	Hydrostatic Head BS3424 > 1 metre
<i>Breathable</i>	Moisture vapour permeable
<i>Martindale</i>	Severe Contract > 50,000
<i>Stain resistant</i>	Excellent stain removal has been observed for grease, ink, blood, urine, coffee, iodine, betadine, ketchup, chewing gum, chocolate, grape juice
<i>Composition</i>	100% Treated polyester. 135cm (53") wide

Technical Information

We recommend a minimum of 32 stitches per 10 cm (8 stitches per inch) and seams must have a minimum 12mm (0.5") bite on the fabric.

Not suitable for use as removable loose covers.

Carmina can be colour co-ordinated with the Agua faux leather collections to produce stunning furniture with dual textured finishes.

Please note that all fabric offered is subject to minor tolerance in respect of shade and other slight variations.

Technical specifications may be amended, please check for the latest information.

Please ask if you require a sample of the current batch available but be aware that stock can move quickly.

Fabric Care

Use a vacuum cleaner or soft brush to remove dust and solid particles.

Always try cleaning products on a hidden piece of fabric to test suitability.

Wipe frequently with a damp cloth to maintain the appearance of the fabric.

All spillages should be removed immediately with a clean absorbent cloth.

Most stains can be removed using cold/warm water and a clean microfibre cloth, however poorly fixed clothing dyes may cause permanent staining.

Stains from products containing oil and grease should be treated with a spirit based solution.

If soap based cleaners are used, all soap residues must be rinsed from the fabric.

Use cold water when treating stains caused by bodily fluid.

Can be cleaned with mild Hypochlorite solutions (up to 10,000 ppm of available chlorine - including Haz Tabs and Chlor-Clean) or Mineral Spirit for infection control purposes.

Do not use solvents, chemical agents, waxes or polishes as this will damage the surface of the fabric.

Can be steam cleaned in situ.

Do not machine wash or dry clean.

Please refer to the Care Sheet on the Agua website for further details.

Samples and enquiries

You can contact us for samples, order enquiries or information about any of our fabric ranges here:

Agua Fabrics Ltd,
Hyde House,
The Hyde, London NW9 6LH
T +44 (0)20 8205 0050
F +44 (0)20 8205 0660
E info@aguafabrics.com
www.aguafabrics.com



Certificate No. FS 531220

AGUA
PERFORMANCE UPHOLSTERY FABRICS



Anti-Microbial



Bleach Cleanable



Fire Retardant Crib 5/IMO



Stain Resistant



Waterproof



Martindale Abrasion Severe Contract



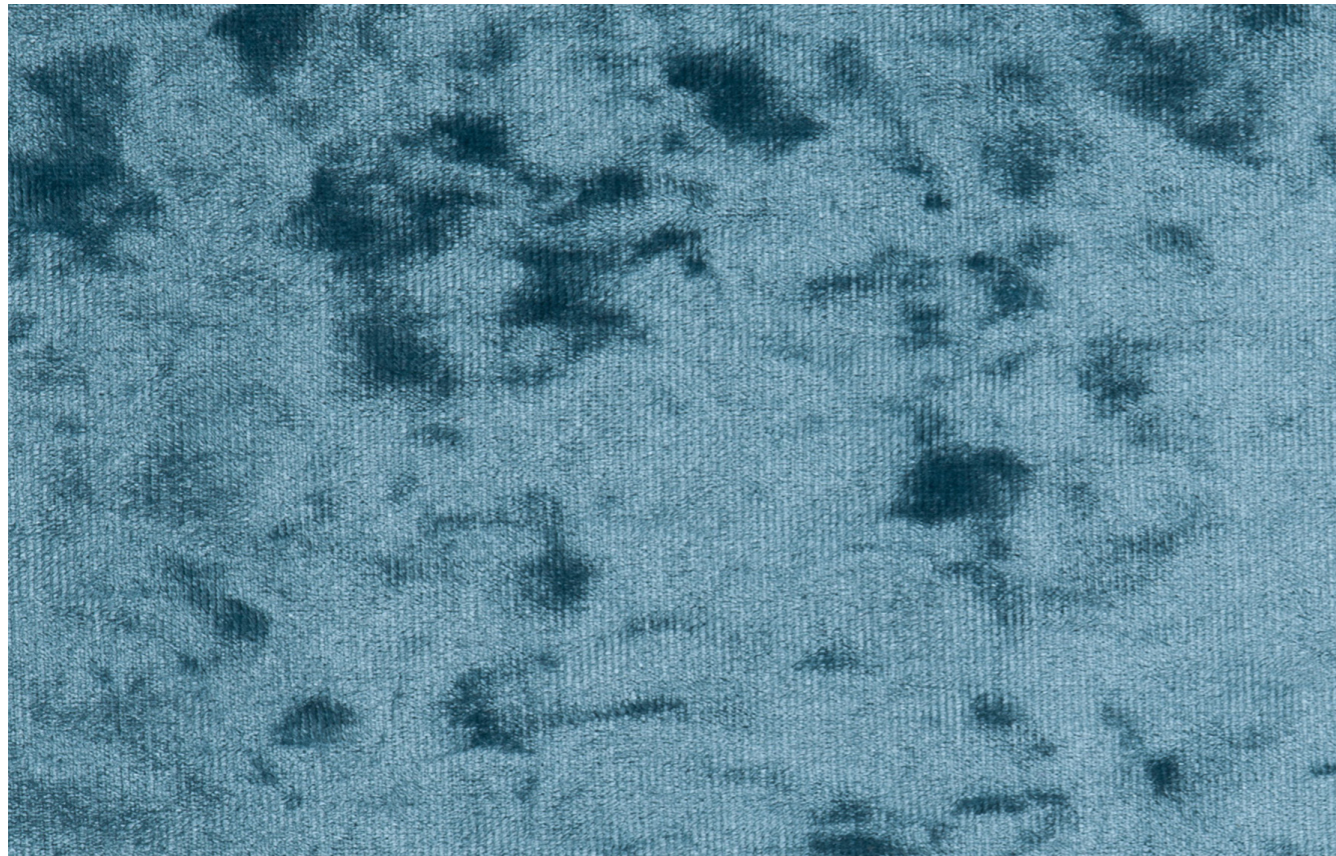
Phthalate Free



REACH Compliant

Carmina Collection | v. 28.0

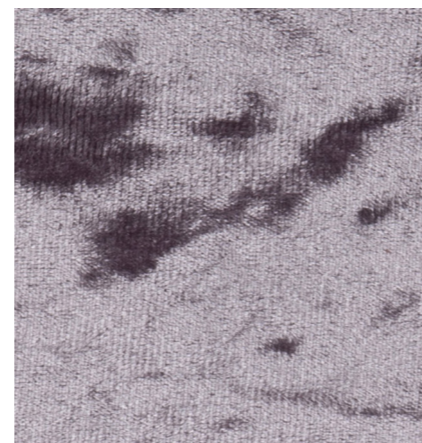
A lustrous crushed velvet for interior upholstery



Carmina Aqua



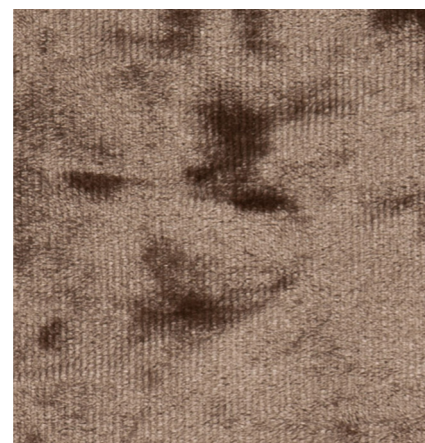
Carmina Silver



Carmina Lavender



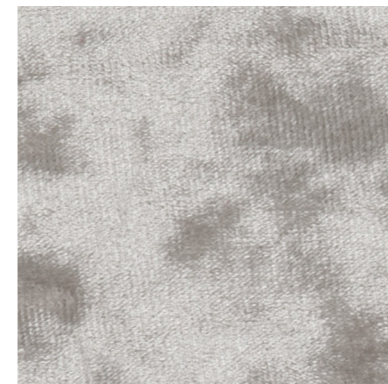
Carmina Ebony



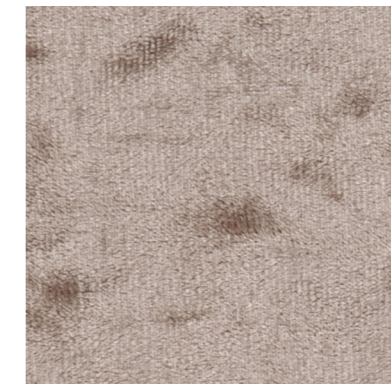
Carmina Chocolate



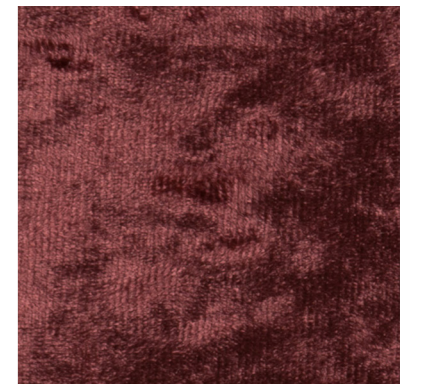
Carmina Cream



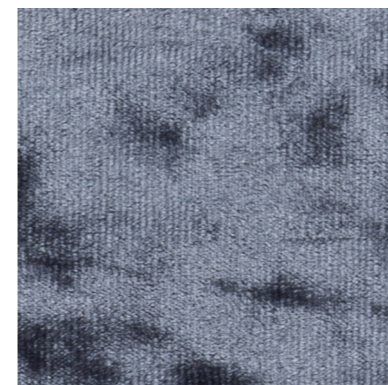
Carmina Ice



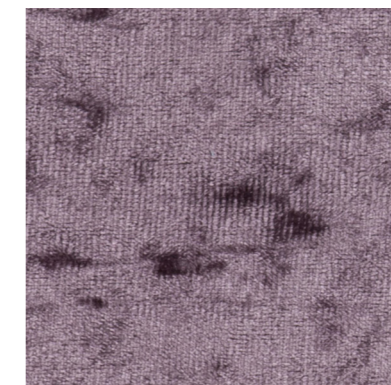
Carmina Truffle



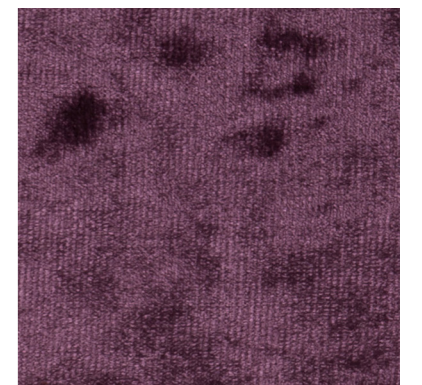
Carmina Mulberry



Carmina Denim



Carmina Amethyst



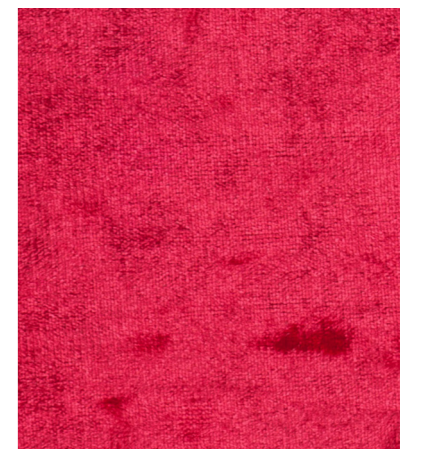
Carmina Purple



Banquette: Carmina Lavender
Bar seats and floor stools: Carmina Silver



Carmina Fuschia



Carmina Red