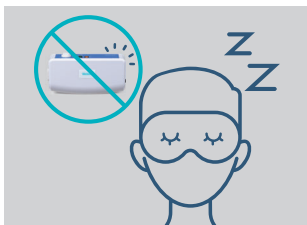


Domus ECO

Quiet-operating pressure redistribution system with dual therapy mode

The Domus ECO is an alternating pressure system designed to prevent pressure injuries with low-noise operation and an alarm mute function, ensuring minimal disruption. It prioritizes patient safety with an audible low-pressure alarm and complies with rigorous flame-retardant standards. Equipped dual therapy modes and a high vapor permeability cover, it maximizes comfort while ensuring durability and consistent clinical performance.



Low operation noise

The air mattress operates at a quiet 30dBA, ensuring it doesn't disturb the patient's rest.



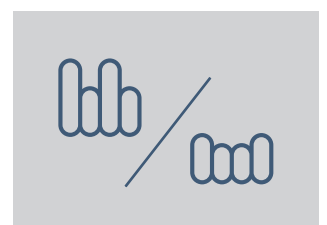
Offers alarm mute

Equipped with an alarm mute function, allowing caregivers to troubleshoot quietly and efficiently.



Supporting 200Kg Weights

Supports patients weighing up to 200 kg, extending its applicability to a broader range of patient needs while enhancing adaptability.



Dual Therapy Mode

Provide Static mode for enhanced patient immersion, Alternate mode for allowing pressure redistribution.

Domus ECO

Fulfill various clinical needs in pressure injury prevention



CPR Strap
Quickly deflate the mattress for emergencies.

Cable Management
Three loops on the side of mattress for managing cable to avoid tripping hazard.

Secure Cover
The stitched structure with a zipper ensures a secure and durable cover.

Quick Connector with Cap
Mattress can be transformed from a powered support surface to a sealed static air mattress for transportation need.





4-Way Stretch Top Cover
Offering low shear, low friction, vapor permeability, and moisture protection, coupled with optimal immersion and envelopment.



Water Resistance Flame Resistance Biocompatibility Vapour Permeable



Fresh Air With Antimicrobial Filter
Antimicrobial material to filter the air coming into the system from the usage environment.

Specifications		Domus ECO	
Pump 	Dimension	28,9 x 15 x 9 cm	
	Weight	1,4 kg	
	Supply voltage	220 - 240V / 50 Hz	
	Case Material	Fire Retardant ABS	
	Therapy mode	Alternating / Static	
Mattress 	Dimension	5" +3" / Overlay	8" / Replacement
	Dimension	200 x 90 x 13+7 cm	200 x 90 x 20 cm
	Cell Height	17 x 5" cell	20 x 8" cell
	Weight	4,5 kg	7 kg
	Top cover material	Poly / PU	
	Cell material	Nylon / PU	
	Maximum patient weight	200kg	

Pump: water resistant standards (IP21); Mattress: flame retardant standards (EN597-1, EN597-2), RoHS, WEEE