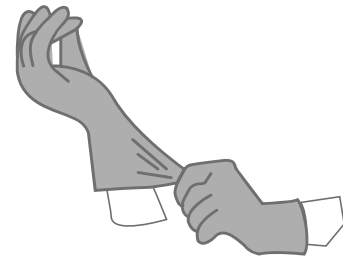


medipal

How to use

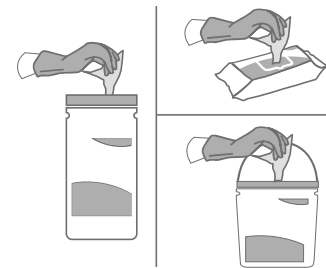
STEP 1 Risk assessment

Please follow your agreed risk assessment policy guidelines regarding the use of PPE. Check medical device equipment manufacturers guidelines for DDAC and Triamine suitability.



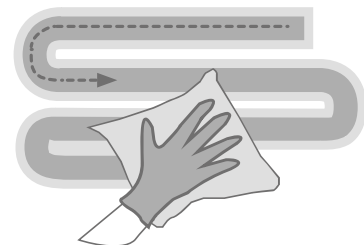
STEP 2 Wipe selection

Check pack for use period and dispense a wipe. Close pack to protect remaining wipes. If visible soil is present, remove with a wipe. Use a fresh wipe to disinfect the surface.



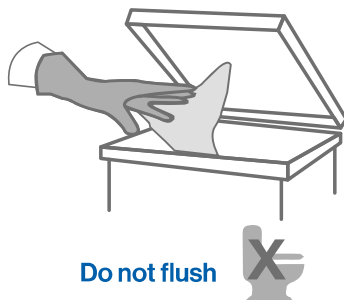
STEP 3 S-Shape technique

Wipe the surface in an S-Shape moving from clean to dirty. Use the wipe flat not scrunched, ensuring the entire surface is wetted. Do not go over the same area twice with the same wipe. Use a fresh wipe if your wipe becomes soiled or dry.



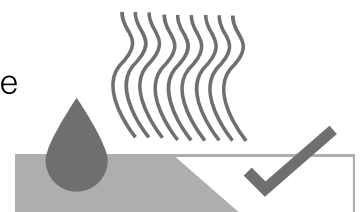
STEP 4 Discard

Do not re-use wipes. Discard used wipes in the appropriate waste bin following your local agreed guidelines.



STEP 5 Let dry

Allow the surface to dry naturally before use. Leave the surface for the stated contact time.



Use biocides safely. Always read the label and product information before use. Re-use of wipes increases the risk of infection, discard each wipe after single use. Store in a cool, dry place out of direct sunlight.