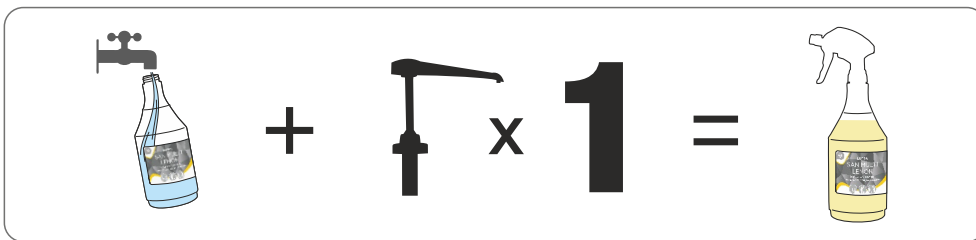


# LUFRA

# SAN MULTI LEMON

A concentrated fragranced daily cleaner/ disinfectant suitable for use on all hard surfaces.

## DILUTION RATE



## METHOD OF USE



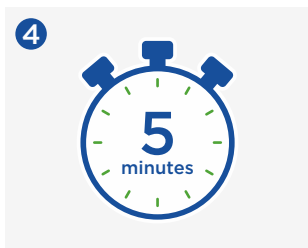
1 Fill an empty trigger bottle with 600ml of clean water.



2 Add 1 shot (30ml) of Lufra San Multi Lemon to the trigger bottle.



3 Spray diluted Lufra San Multi Lemon onto the area and work into the surface with a cloth.



4 For efficacy against bacteria, allow a 5 minute contact time on the surface.



5 Wipe away with a clean cloth. Leave the surface to air dry.

## EFFICACY STANDARDS

BACTERICIDAL - EN 1276		
CONTACT TIME	DILUTION	KILL RATE
5 Minutes	1 : 23	99.999%

ENVELOPED VIRUSES - EN 14476		
CONTACT TIME	DILUTION	KILL RATE
60 Seconds	1 : 23	99.99%

All testing methods conducted in dirty conditions by an independent laboratory.

Use biocides safely. Always read the label and product information before use.

## PRODUCT INFO



Pack Size: 5L  
Product Code: 202  
Odour: Lemon, Sweet  
Colour: Yellow  
pH (undiluted): 6-8  
Shelf life: 2 years



For Health & Safety information, please scan the QR code provided.

THINK SAFE, CLEAN GREEN

Christeyns Professional Hygiene UK Ltd | Clover House | Whaley Bridge  
SK23 7DQ | T +44 (0) 1663 733 114 | W www.christeyns-ph.co.uk

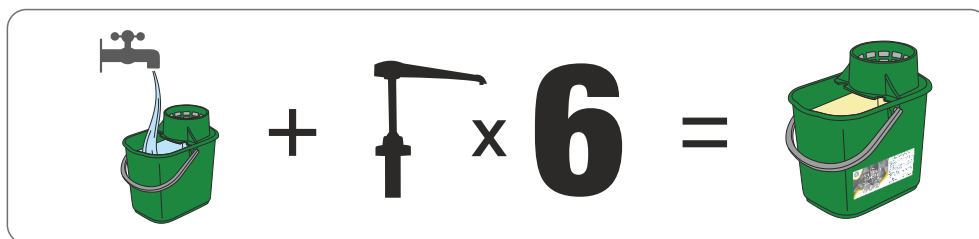
  
**CHRISTEYNS**  
PROFESSIONAL HYGIENE

# LUFRA

# SAN MULTI LEMON

A concentrated fragranced daily cleaner/ disinfectant suitable for use on all hard surfaces.

## DILUTION RATE



## METHOD OF USE



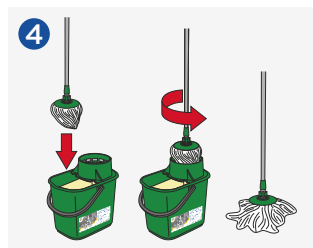
Place a wet floor sign in the area to be cleaned.



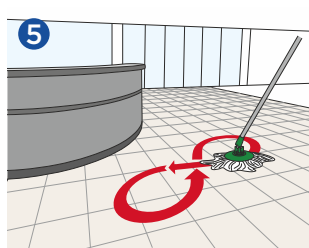
Fill an empty bucket with 5 litres of clean water.



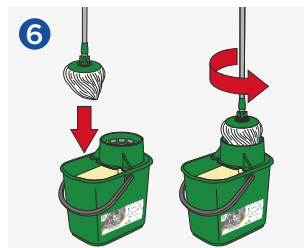
Dispense 6 pumps (180ml) of Lufra San Multi Lemon into the bucket.



Immerse the clean mop head into the bucket of Lufra San Multi Lemon solution and wring out the mop thoroughly.



Apply the mop to the floor and wipe in a figure of 8 motion, working the mop side to side.



Clean the dirty mop head in the bucket and repeat the previous steps until the floor is clean. Allow to air dry for a streak-free finish.

## EFFICACY STANDARDS

BACTERICIDAL - EN 1276		
CONTACT TIME	DILUTION	KILL RATE
5 Minutes	1 : 23	99.999%

ENVELOPED VIRUSES - EN 14476		
CONTACT TIME	DILUTION	KILL RATE
60 Seconds	1 : 23	99.99%

All testing methods conducted in dirty conditions by an independent laboratory.

Use biocides safely. Always read the label and product information before use.

## PRODUCT INFO



Pack Size: 5L  
Product Code: 202  
Odour: Lemon, Sweet  
Colour: Yellow  
pH (undiluted): 6-7.5  
Shelf life: 2 years



For Health & Safety information, please scan the QR code provided.

THINK SAFE, CLEAN GREEN

Christeyns Professional Hygiene UK Ltd | Clover House | Whaley Bridge  
SK23 7DQ | T +44 (0) 1663 733 114 | W www.christeyns-ph.co.uk

  
**CHRISTEYNS**  
PROFESSIONAL HYGIENE



DISINFECTANTS

# LUFRA SAN MULTI LEMON

## DAILY CLEANER & DISINFECTANT



- KILLS BACTERIA
- EFFECTIVE AGAINST BACTERIA, YEAST AND ENVELOPED VIRUSES
- LEMON FRAGRANCE

### PRODUCT DESCRIPTION

LUFRA SAN MULTI LEMON is a cleaner and disinfectant with a lemon fragrance designed for use on all hard surfaces. LUFRA SAN MULTI LEMON is neutral in pH and can be used on a daily basis to maintain clean and hygienic conditions.

Use to clean sinks, taps, baths, walls, doors, floors, fittings and fixtures, bedsteads, hand rails, toilets, bidets and urinals.

### EFFICACY

A concentrated cleaner-disinfectant. LUFRA SAN MULTI LEMON has been tested against a range of standards, at a dilution as shown below by an independent laboratory.

STANDARD	DILUTION RATE	CONDITIONS	CONTACT TIME	PASSED
<b><u>Bactericidal</u></b>				
EN 1276	1:23 (4.2%)	Dirty	5 Minutes	≥5 log reduction
EN 13697	1:23 (4.2%)	Dirty	5 Minutes	≥5 log reduction
<b><u>Yeasticidal</u></b>				
EN 13697	1:23 (4.2%)	Dirty	5 Minutes	≥4 log reduction
EN 1650	1:23 (4.2%)	Dirty	5 Minutes	≥3 log reduction
<b><u>Virucidal</u></b> <b><u>(enveloped virus)</u></b>				
EN 14476 (MVA)	1:23 (4.2%)	Dirty	60 Seconds	≥4 log reduction

## INSTRUCTIONS FOR USE

---

Dilute with water. Mop, spray or scrub with LUFRA SAN MULTI LEMON. Allow the contact time shown in the table and then rinse well with clean water.

**Use biocides safely. Always read the label and product information before use.**

## DILUTION RATE

---

Cleaning, Deodorising & Sanitising (Bacteria and Yeast)	1:23 (4.2%)
Cleaning, Deodorising & Sanitising (Enveloped Viruses)	1:23 (4.2%)

## ADDITIONAL INFORMATION

---

pH Level: 6-8

## STORAGE

---

Use above 5°C. Store preferably above 0°C. Shelf life 2 years.

## PACKAGING

---

Jerry Can 5 Litre

## NON WARRANTY

---

This information is based on our current knowledge and is intended to describe the product for the purposes of health, safety and environmental requirements only. It should not therefore be construed as guaranteeing any specific property of the product.