



Pro-Care Bariatric

High Specification Pressure Relieving Bariatric Mattress

APEX
Care for a Healthy Life



Pro-care Bariatric

High Specification Pressure Relieving Bariatric Mattress

The Pro-care Bariatric is a high specification pressure relieving dynamic mattress, designed to offer Bariatric patients exceptional levels of support in any healthcare environment.

The Pro-care Bariatric dynamic mattress comes with an intuitive weight setting system, enabling the caregiver to set the mattress to the patient's weight between 40 KG and 450 KG at the touch of a button. It is also possible to set the mattress cycle time intervals, enabling the caregiver to step a patient down off the system gradually over time.

The Pro-care Bariatric has a range of unique features for both patients and caregivers, and has been designed to comply with the most stringent infection control guidelines. It is suitable for all types of Bariatric patient from pressure ulcer prevention right the way through to managing the most severe pressure ulcers.

The Pro-care Bariatric is one of the only mattresses on the market that has a designated heel zone allowing the caregiver to float the heel, meaning they can comply with EPUAP guidelines on pressure ulcer management in the heel area.

The Pro-care Bariatric is available in two widths 107 cm and 122 cm



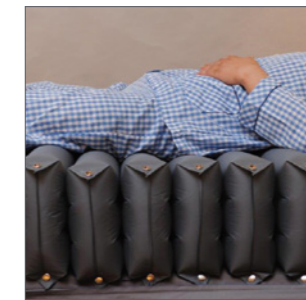
CPR: The CPR dials are located at the head end of the mattress and are designed to be highly visible in an emergency. The unique dial design reduces the risk of accidental activation.



Transport Mode: Transport Mode is designed to be simple and easy to use. Its simple click-in design also means it is robust and easy to keep clean.



Antimicrobial Filter: The antimicrobial filter is designed to ensure the air going into the system is as clean as possible, helping to protect the pump from break down and to ensure air stored in the mattress is as clean as possible.



Cell-in-Cell QubiCell™: The air cells modular design means maintenance, replacement and decontamination are easy to carry out. Cell-in-Cell QubiCell™ technology also means that the patient is safely supported throughout the length of the mattress, and the unique rectangular cell design means the patient benefits from higher levels of pressure relief, comfort and weight redistribution. The Cell-in-Cell design can help provide better support to the patient in the case of power failure.

Product features and benefits

Designated Heel Zone: Allows the caregiver to isolate individual air cells in the heel area for 100% pressure offloading, allowing the caregiver to float the heel and comply with EPUAP guidelines relating to pressure ulcer management.

Weight Setting Function: The intuitive and easy to use weight setting function allows the end user to set the mattress up to an individual patient's weight, meaning the internal cell air pressures will be correctly set for each use.

Alternating Therapeutic Mode: Continuously and sequentially inflates and deflates the air cells to allow for pressure redistribution over a 10, 15, 20 or 25 minute cycle time.

Static Mode: Addresses areas of high contact pressure by redistributing the body mass over a greater surface area through a process of immersion. The mattress will not stay in the static mode but will revert back to the therapeutic mode after 20 minutes.

Seat Inflate Mode: When a patient is in the upright position, the seat inflate mode increases the pressure throughout the mattress in order to better support the sacral area.

Low Pressure Alarm: Alerts the caregiver if there is a loss of air pressure in the mattress.

Max Firm Mode: Hyper-inflates the cells, providing a firm surface for moving, handling and nursing procedures. For the safety of the patient the mattress will only stay in Max Firm Mode for 20 minutes and will then revert back to Alternating Therapeutic Mode.

Power Failure Alarm: Notifies the caregiver when there is a loss of power if the mattress is unplugged.

Service Fault Indicator: Alerts the caregiver when the mattress needs to be repaired.

Lock Out: Automatically locks the control panel to help prevent the changing of settings inappropriately.

Rectangular Sacral Cell-in-Cell Design: Unique cell design offers the patient more support and comfort in the Sacral area throughout the therapeutic pressure relieving cycle.

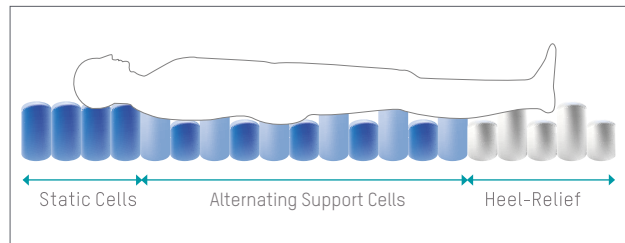
Mattress Cover: The cover is flame resistant to BS 7175 Crib 7 and has a host of features to aid with infection prevention including a 360 degree zip, white underside, vapour permeability, antimicrobial properties and is water resistant. The cover is four way stretch to offer greater pressure relief and comfort levels to the patient. It is also possible to launder the cover in a washing machine.

Mattress Specification	
Mattress Dimensions	: 200 x 107 x 25.4 cm or 200 x 122 x 25.4 cm
Mattress Weight	: 11.6 KG
CPR	: Robust CPR Valves
Cell Structure	: Cell-in-Cell QubiCell™
Designated Heel Zone	: Allows for complete offloading/ floating of heels
Max Firm	: To assist with patient care
Seat Inflation Mode	: Helps support the patient in the upright position
Cable Management	: To allow for safe storage of the power cable
Modular Cell Construction	: For ease of maintenance
Anchoring Straps	: For safe attachment to bed frame
Static Head Zone	
Static Mode	
Non-Slip Base	

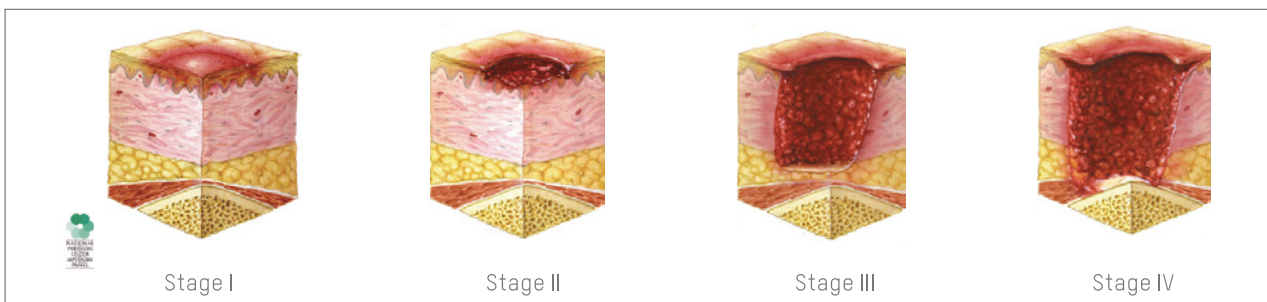
Cover Specification	
Flame Resistant Crib 7	
360 Degree Zip	
White Underside of Cover	
Four Way Stretch	
Vapour Permeable	
Water Resistant	
Machine Washable	
Antimicrobial	

Pump Specification	
Maximum Patient Weight	: 450 KG
Minimum Patient Weight	: 40 KG
Pump Size	: 29.1 x 20 x 11.7 cm
Pump Weight	: 2.2 KG
Cycle Time	: 10, 15, 20 and 25 Minutes
Weight Setting	: Manual patient weight adjustment 40 KG - 450 KG
Voltage	: AC220-240V, 50Hz; AC 120V/60Hz
ABS Cover	: ABS Flame Retardant Pump Cover
Transport Mode	
Hanging Brackets	
Audible and Visual System Fault Alarms	
Antimicrobial Air Filter	
Extra Long Power Cable	
Mute Button	
Easy to Identify Power Light	
Pump Lockout	
Fault Indicator	

Alternating Support Surface



Pressure Ulcer Classification Guide



HEADQUARTERS

Apex Medical Limited

Unit 21, Optima Park,
Thames Road, Crayford,
Kent, DA1 4QX
T: 01322 520 560
F: 01322 554 182
enquiry@apexmedicalcorp.co.uk



www.apexmedicalcorp.co.uk