

Care & Independence

Sling Model:

Serial Number:

User Name:

*The sling model and serial number
are located on the label on the reverse of the sling.*

Care & Independence Ltd is a UK manufacturer registered with MHRA as a Class 1 Medical Device Manufacturer and this sling is a Class 1 medical device as defined in Article 51, Annex VIII Rule 1 of the Medical Device Regulation 2017/745.

COMFORT VALUE™ slings are designed and manufactured to meet or exceed BS EN 10535:2006 for the transfer of disabled persons. COMFORT VALUE™ slings are designed and manufactured by Care & Independence, a certified ISO9001:2015 organisation.

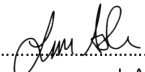
Declaration

Care & Independence Ltd, declares under its sole responsibility that the aforementioned products to which this declaration relates, and which bear the CE marking, are in conformity with the applicable requirements of EU regulation 2017/745 as transposed in the laws of the Member States.

THIS USER GUIDE IS APPLICABLE
FOR THE FOLLOWING
COMFORT VALUE™ SLINGS:

CVSA: COMFORT VALUE™ Stand Assist

ISSUE DATE: 08-10-21
VERSION: UG/CVSA-EN01
STATUS: APPROVED
AUTHORISED BY: Technical Director


.....
J. ASH

1. GENERAL



1.1 WARRANTY: The COMFORT VALUE™ slings covered in this User Guide have been awarded a THREE YEAR WARRANTY. Any manufacturing defect will be rectified free of charge. Product damage through wear and tear, neglect or accidental damage is not covered by the warranty.

1.2. COMPATIBILITY: Care & Independence sit-stand slings have been manufactured to work with most of the major stand aid manufacturers' equipment. A compatibility statement is available on request.

2. SLING SAFETY



2.1 GENERAL:

2.1.1. Only competent persons should ever use stand aids and slings.

2.1.2 A risk assessment must be completed before using the sling, even if the stand aid and sling is provided from the same manufacturer.

2.1.3 It is essential that the sling is fit for purpose; the correct size and type of sling for an individual is essential to ensure the safety and comfort of the person being transferred.

2.1.4 Product care and inspection instructions should be followed at all times.

2.1.5. **No sling must ever be used to lift more than its rated load** (see label).

2.1.6. The intended sling and stand aid combination should be compatible.

2.1.7 **If there is any doubt about sling safety, remove the sling from use until checked and authorised for use by a competent person.**

2.2 SLING INSPECTION:

2.2.1 Care & Independence recommend pre-use sling checks by a competent person.

2.2.2 Slings are Class One Medical Devices and are subject to Lifting Operations and Lifting Equipment Regulations (LOLER) Examinations. A LOLER examination may only be conducted by a person trained and qualified to do so. Space is provided on the sling label to record LOLER details.



3. DAMAGED OR FAULTY SLINGS



Care & Independence have a strict *Returns & Repair Procedure* to ensure the safety of all involved.

Please do not send slings and bathing products back without completing the Return/Repair form.

4. PRODUCT CARE



4.1 GENERAL CARE:

4.1.1 Repeated washing may lead to sling deterioration. **Care & Independence strongly recommend replacing the sling at the first signs of wear or damage, as opposed to after a specified time frame.**

4.1.2 Each sling is marked with its maximum wash temperature.

4.1.3 Discolouration to some materials or fading labels may occur as a result of laundering.

NOTE: It is a health & safety requirement that the sling label must be legible throughout the sling's working lifetime.

4.2 WASHING THE SLING: Every sling is marked with its maximum wash temperature. Close hook & loop fastenings before laundering to prevent damage to the fabric and webbing.

4.3 DECONTAMINATION:

Slings can withstand a strong decontamination routine but regular use may impair the lifespan of the sling.

A copy of these instructions should be provided to the person(s) laundering the sling.



- Wash gently at 40°C. Use a mild soap solution or a non-biological detergent without bleaching additives.

- Do not add bleach or stain removers.

- Air dry, cabinet dry or tumble dry on a cool cycle (below 60°C). Do not tumble dry on a hot setting.

- Do not place on hot pipes or heaters. Keep away from flames.

- Do not iron.

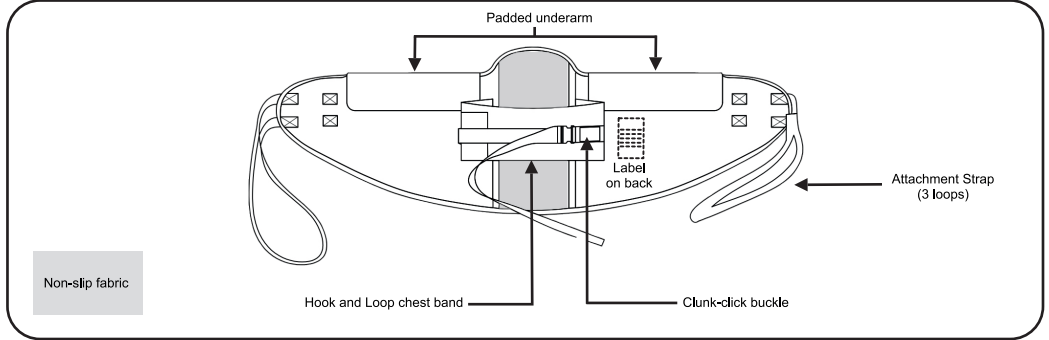
FURTHER INFORMATION: Available to download from our website



- Sling Care Instruction Guide (includes decontamination advice).
- Returns & Repair Procedure

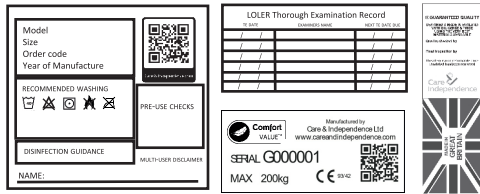
5. GETTING TO KNOW YOUR SLING

5.1 THE STAND ASSIST SLING



5.2 SLING LABELS EXPLAINED

There are four labels associated with each sling.



5.2.1 SLING INFORMATION

Printed label sewn onto back of sling. Provides useful information such as Sling Model Type, Washing instructions, Pre-Use Checks and a space to write User's name. A QR code is also featured that once scanned leads direct to product webpage where support resources are available.

5.2.2 LOLER RECORD

Printed label sewn onto back of sling. Convenient to record the sling's LOLER checks

5.2.3 PRODUCT INFORMATION

Woven label sewn onto back of sling. Contains serial number, Health & Safety Regulation Compliance mark, Maximum Load Capacity and QR code.

5.2.4 QUALITY TAG (Disposable)

Attached to the side of the sling. Shows factory quality control approvals. Reverse side is Union flag.

6. ADDITIONAL SUPPORT AVAILABLE



SCAN SLING LABEL QR CODE FOR;

- Product information
- User Guide
- Fitting video
- Sling Care Instruction Guide
- Sling Pre-Check Inspection Guide
- Sling Sizing Guide



Free product training is also offered. Please contact us for further information.



- Expert advice
- Full support

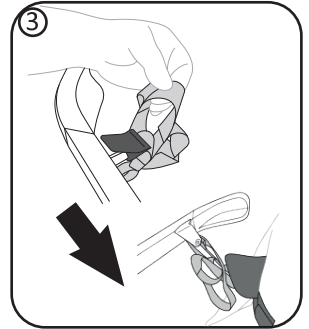
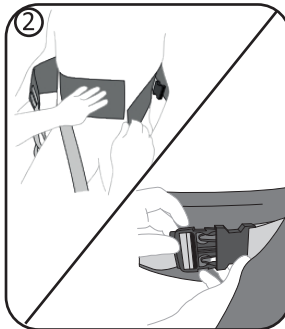
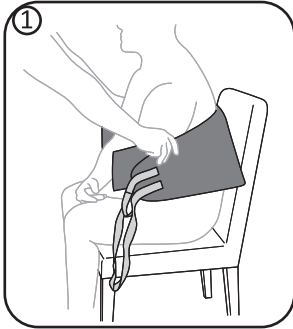


- Faded label replacement
- Sling repair
- LOLER examinations

7. FITTING THE SLING

Before you start, check that the sling is in safe and clean condition and is the appropriate size and model for the person to be transferred. There are a variety of ways to use and adjust this sling, so please read carefully.

7.1 IN A SEATED POSITION



7.1.1

- i. With label facing outwards, slide the sling down to mid-back, keeping it centrally aligned and with the users arms positioned to the underarm sections.

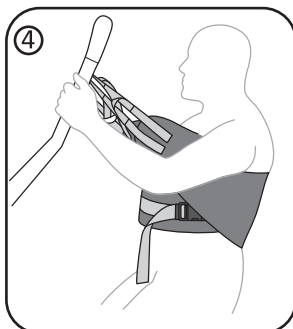
NOTE: It may be necessary to support the user to prevent them tipping forward.

7.1.2

- i. With users arms on the outside, wrap the hook and loop chest band around the torso and fasten.
- ii. Secure the clunk-click fastening and tighten strap.

7.1.3

- i. Bring in the standing aid and adjust position as required and where model allows.
- ii. Attach the appropriate strap loops onto the standing aid handle bar.



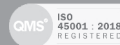
7.1.4

- i. Check for snagging.
- ii. Slowly raise user into a standing position.

To lower a user back into chair, repeat above steps 7.1.1 - 7.1.3 in reverse order.

Care & Independence
www.careandindependence.com

Unit 3, Telford Business Centre, Telford Road, Bicester, OX26 4LD
T. 033 012 80808 E. sales@careandindependence.com
Monday - Friday 08.30 -17.00



©2021 Care & Independence Ltd All Rights Reserved.
Contents of this publication are intended as a guide only. Although due care and attention has been given to ensure that instructions are accurate and correct, in case of doubt, please refer to your prescribing clinician or contact the Care & Independence team on 033 012 80808. Care & Independence Ltd reserve the right to modify, add or delete details and is under no obligation to notify the user of amendment. All data is correct at time of printing.